

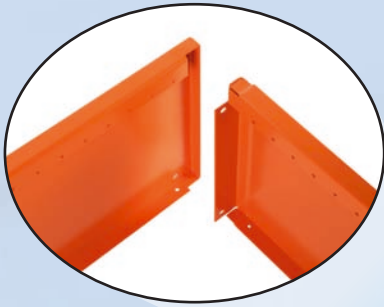
BREMCA

250 Series *Switchboard Enclosure System*



Fast • Simple • Versatile

Step 1



Channels

Due to the unique corner design, the channel is the cornerstone component of this system. Either blank or slotted, a channel is used as the top, bottom and sides of a switchboard construction.

- *Manufactured from 1.6mm electrogalv steel.*
- *Powder-coated ripple finish. Cream or X15 Orange.*
- *Channel sizes from 250mm to 2250mm*
- *Standard depths: 120mm, 220mm, 340mm and 440mm. Deeper options available using multiples of standard depth channels.*

Assembled with:
Bremca Cab Bolts & Flange Nuts



Gland Plates fitted to Slotted Channels

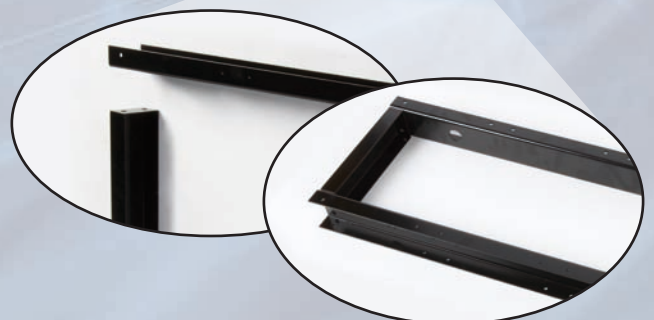
- *3 material options;*
 - *1.2mm electrogalv steel (powder-coated ripple finish Cream or X15 Orange).*
 - *3.0mm Aluminium*
 - *3.0mm PVC plastic*
- *120mm and 220mm deep.*
- *340mm and 440mm aluminium options available.*
- *Gland plate sizes: 250mm, 500mm, 750mm and 1000mm.*
- *Internal gland plate options available for plinth mounted switchboards.*

Plinths

Assembled in just minutes, the plinth provides a strong robust option for floor standing switchboards.

- *Manufactured from 3.0mm electrogalv steel.*
- *Powder-coated gloss black finish.*

Plinth options available in 250mm increments and depth to suit.



Step 2

Mullions

Mullions can be mounted horizontally and/or vertically to divide an enclosure allowing for design segregation.

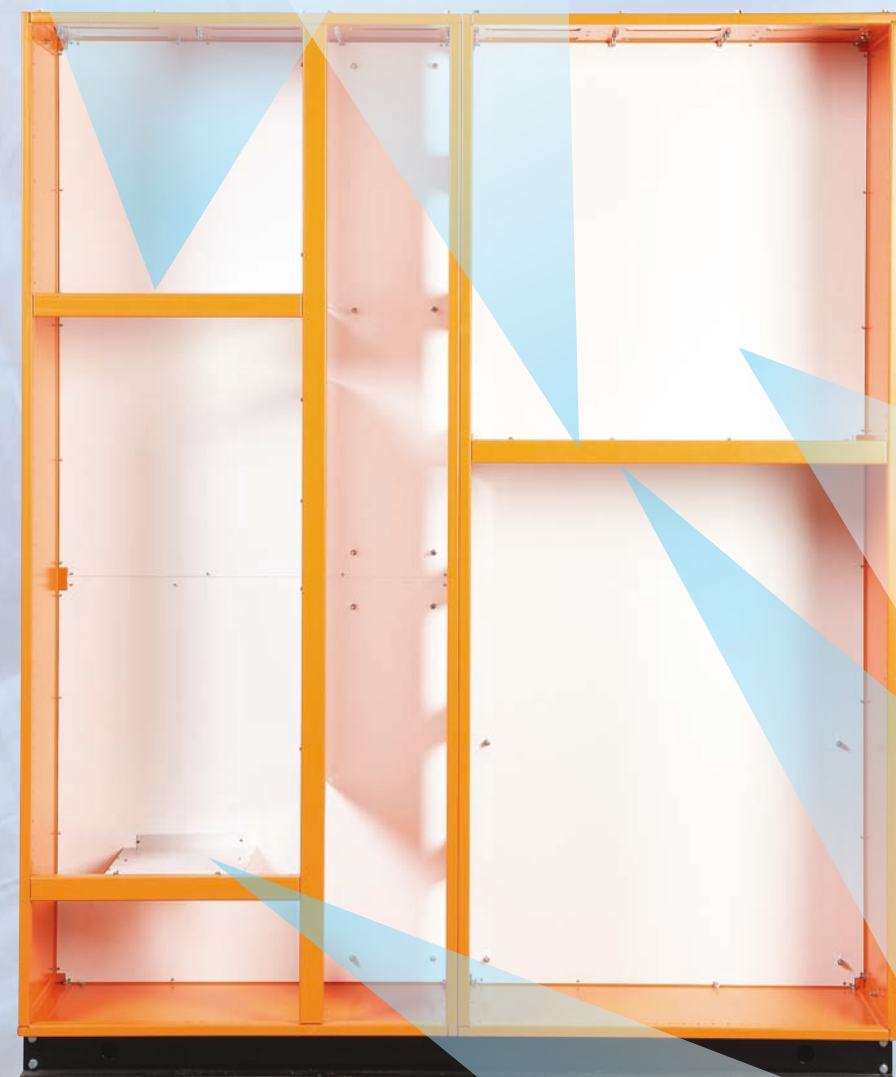
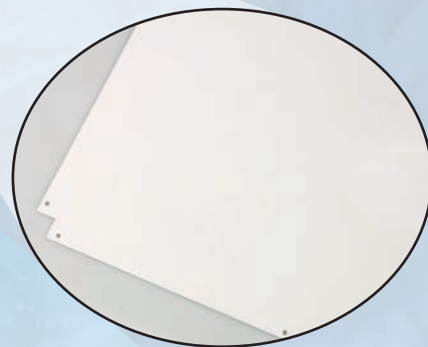
- *Manufactured from 1.6mm electrogalv steel.*
- *Powder-coated ripple finish. Cream or X15 Orange.*
- *Mullion sizes from 250mm to 2250mm*

Simply fixed by Bremca Tek Screws.



Back Plates

- *Manufactured from 1.2mm electrogalv steel.*
- *Powder-coated gloss white finish.*
- *Pre-positioned indentations for gear tray or gable tray mounting*



Separator Plates

Separator plates are secured between mullions and the back plate to provide division and/or separation. Form 1, 2 and 3 segregation is easily achieved.

- *Manufactured from 1.2mm electrogalv steel.*
- *Powder-coated gloss white finish.*
- *Depth options: 120mm, 220mm, 340mm and 440mm.*
- *Separator sizes: 250mm, 500mm, 750mm and 1000mm.*
- *Separator styles: Blank or preformed Knockout options.*



Step 3

Gable Trays

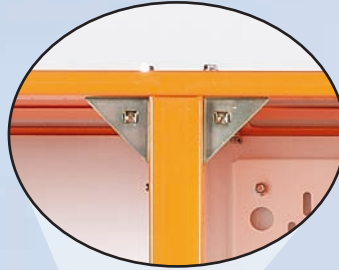
For use in cable ducts or cable ways.

- Manufactured from 1.2mm electrogalv steel.
- Powder-coated gloss white finish.
- Height options: 500mm, 750mm and 1000mm.
- Width options: 250mm and 500mm.

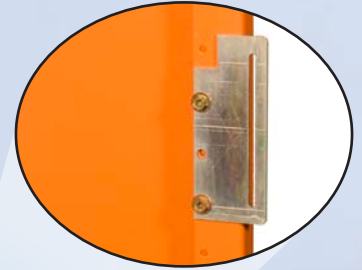
Pre-punched with mounting and lifting holes.



Corner Gussets



Door Catches

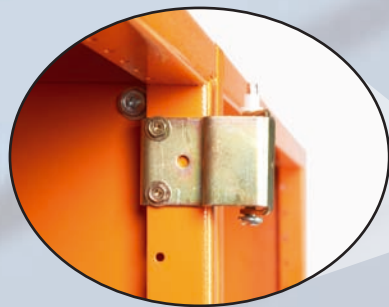


Earth Bonding Straps for Doors and Fixed Covers



Hinges

Left, right, top & bottom.

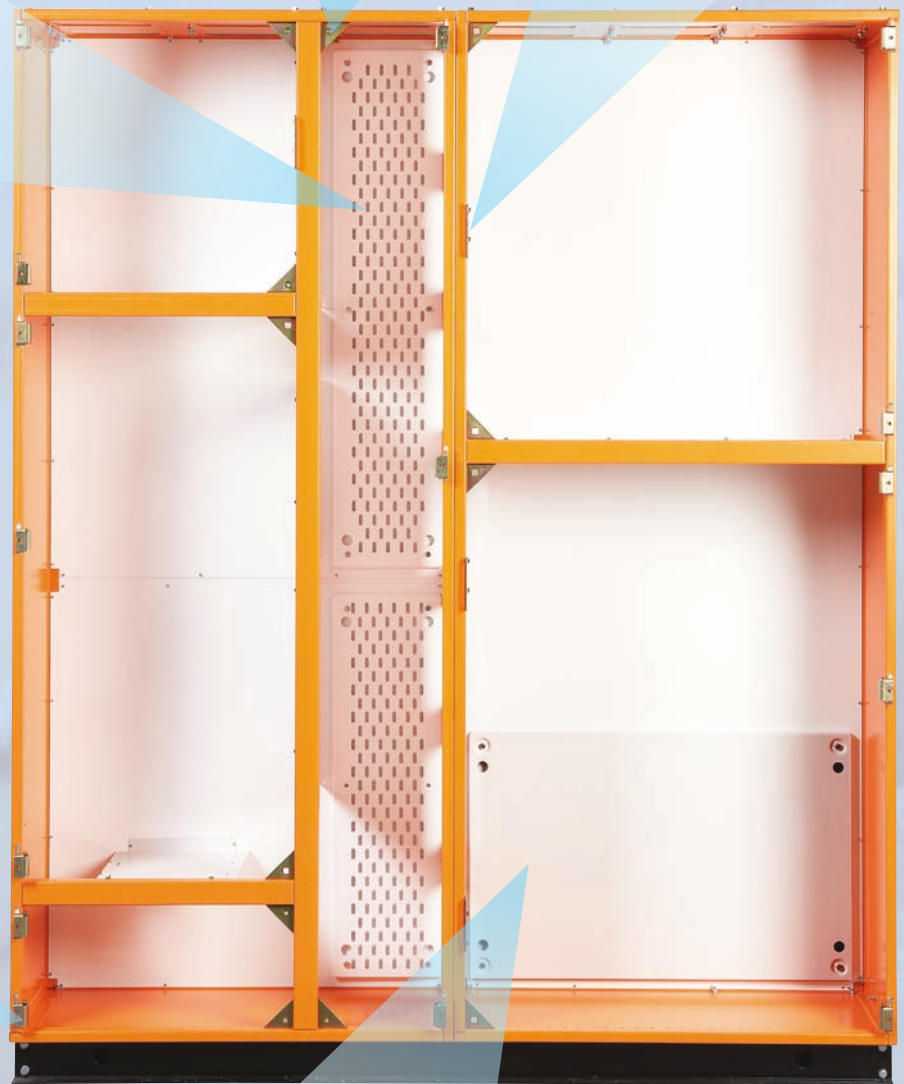


Gear Trays

For mounting and installation of accessories.

- Manufactured from 1.2mm or heavy duty (HD) 1.6mm electrogalv steel.
- Powder-coated gloss white finish.
- Height & width options: 250mm, 500mm, 750mm and 1000mm.
- Joiners available to suit 1.6mm (HD) gear trays.

Pre-punched with mounting and lifting holes.



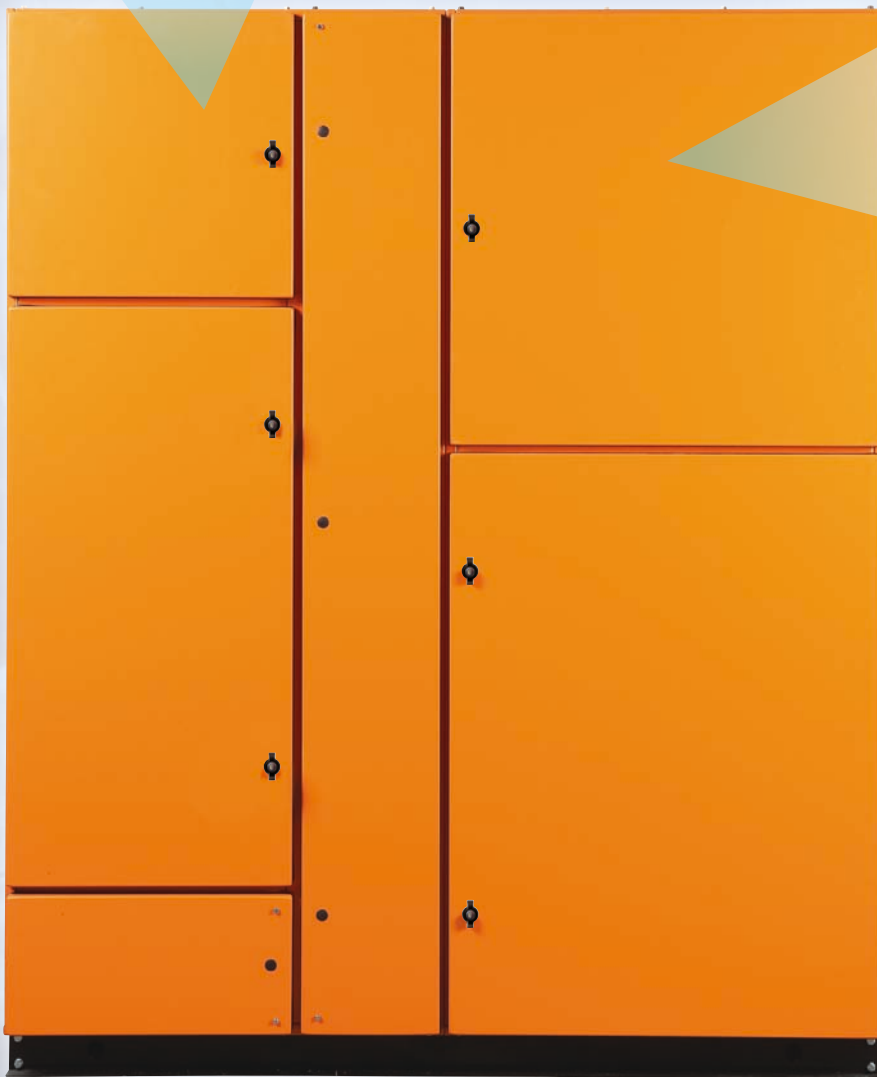
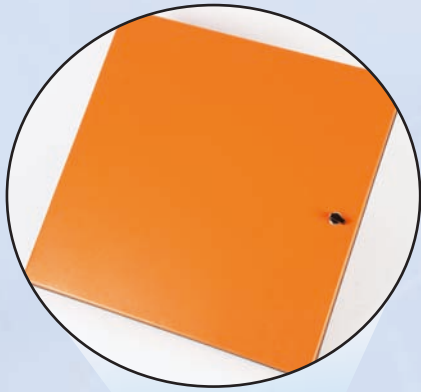
Bremca is committed to the attainment of RoHS compliance of 250 Series components.

Step 4

Doors / Fixed Covers

Standard range of door locks available. Can be screwed or secured shut for fixed cover type arrangements. Fixed covers can have the advantage of being hinged. Doors available with pre-fitted BIP door seal.

- *Manufactured from 1.6mm electrogalv steel.*
- *Powder-coated ripple finish. Cream or X15 Orange.*
- *Can be hinged left, right and top or bottom.*
- *Height options: 250mm increments from 250mm to 2250mm.*
- *Width options: 250mm increments from 250mm to 1000mm.*



Hinged Internal Doors

Provision to mount selected accessories and components.

- *Manufactured from 1.6mm electrogalv steel.*
- *Powder-coated gloss white finish.*

Hinged Escutcheons

6 sizes available either blank or with knockouts for MCB chassis.

- *Manufactured from 1.6mm electrogalv steel.*
- *Powder-coated gloss white finish.*
- *Up to 96 poles.*

Fastenings & Door Kits

A full range of prepackaged fastening & door kits are available separately or in bulk packs.

Bremca 250 Series Enclosure System - IP54 Rating

Applicable to 250 Series assemblies constructed for indoor type applications utilising the Bremca proprietary BIP Door Seal.

DUST RATING IP 5x
(1st IP Numeral)

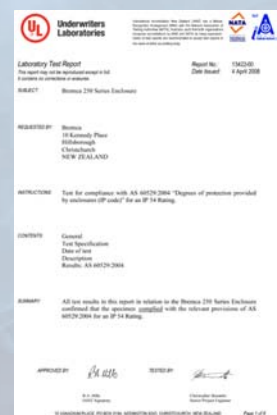
WATER RATING IP x4
(2nd IP Numeral)

Degree of protection against the ingress of dust.

Degree of protection against the ingress of water.

Protection against dust. Limited ingress permitted, no harmful deposits.

Protected against water splashed from any direction. Limited ingress permitted, no harmful effect.



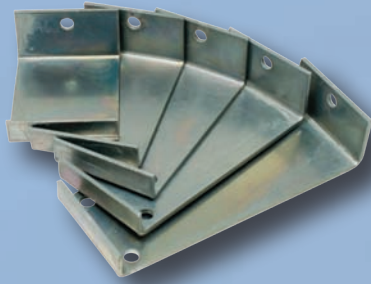
Certification issued by UL Laboratories, Christchurch, New Zealand

Standard Hanger Brackets

Tek-screwed to the front of channel for the mounting of components.

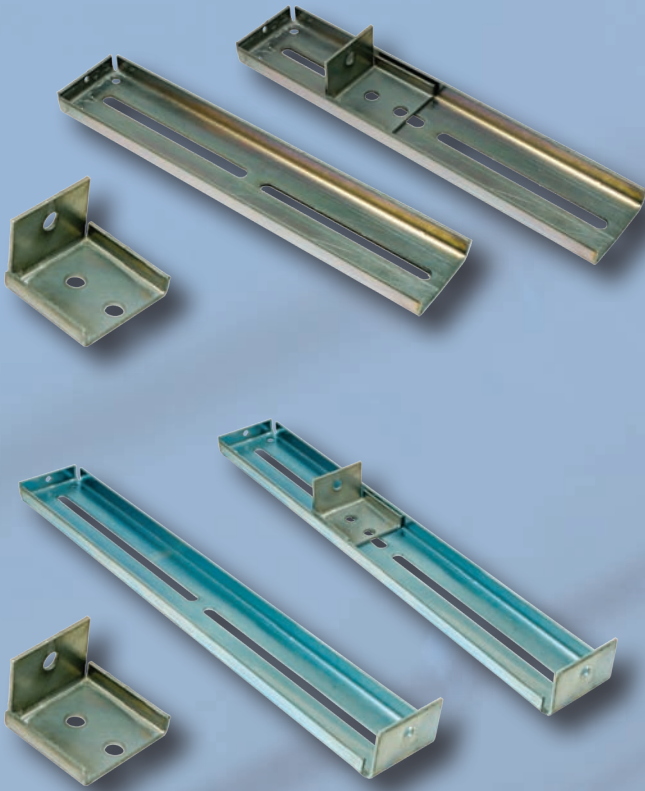
Available in the following sizes:

- C1 - 46mm Deep
- C2 - 58mm Deep
- C3 - 67mm Deep
- C4 - 93mm Deep
- C5 - 78mm Deep



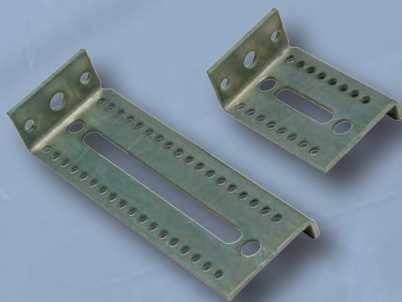
Front Mount Adjustable Brackets

For adjustable mounting of equipment from the front.

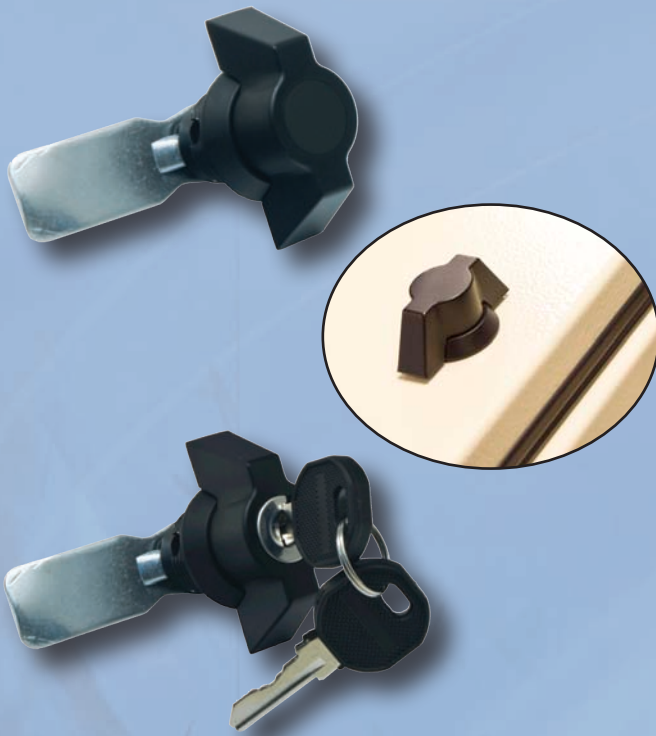


Rear Mount Adjustable Brackets

For adjustable mounting of equipment from the rear.



Door Locks & Key Locks



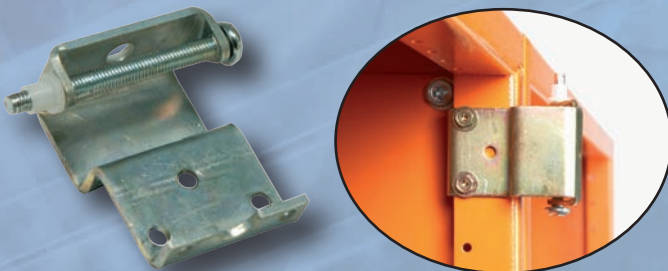
* New 22.5mm series available late 2009.

3 Point Locking Options



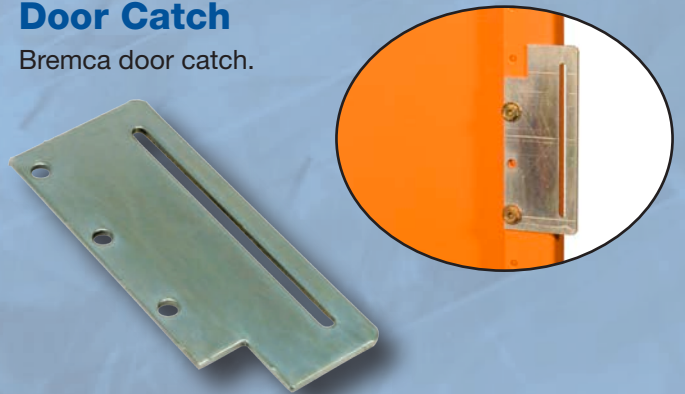
Assembled Door Hinge & Bush

Complete with hinge bush & Bremca Hinge Screw. Can be mounted left, right, top & bottom.



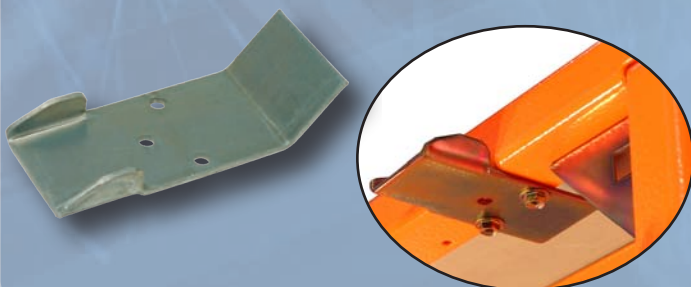
Door Catch

Bremca door catch.



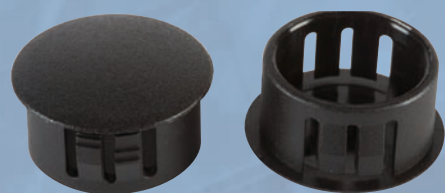
Door Support Bracket

To support and guide large doors.



Fixed Cover Blanking Plug

To fill door lock holes when fixed cover required.



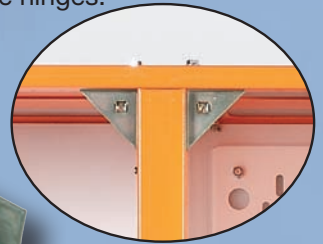
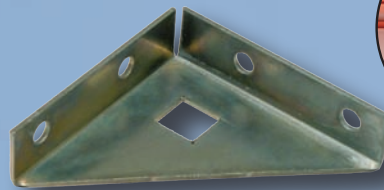
Anti-Tamper Seal

For sealing CT chambers and fixed covers.

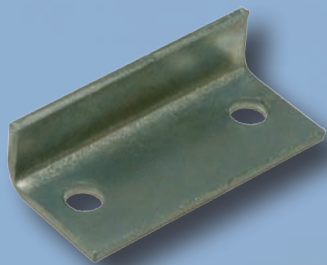


Corner Gusset

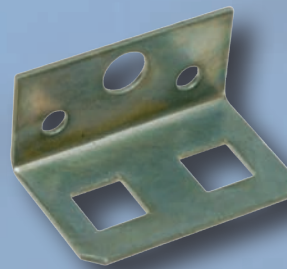
Fitted to each corner opposite hinges.



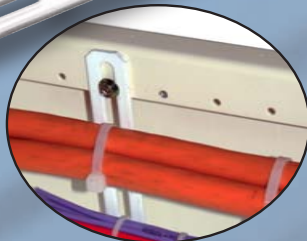
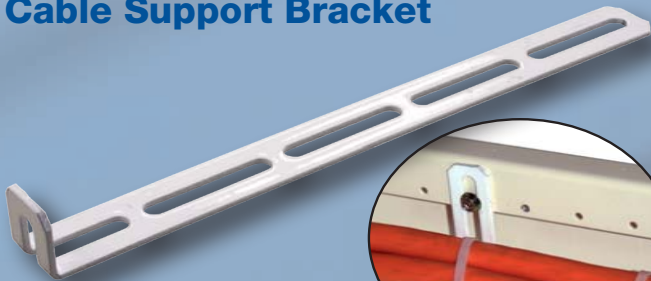
Masking Panel / Escutcheon Extrusion Bracket



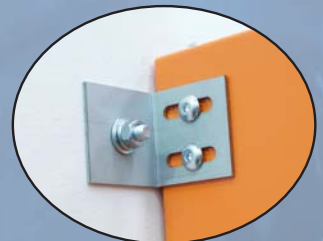
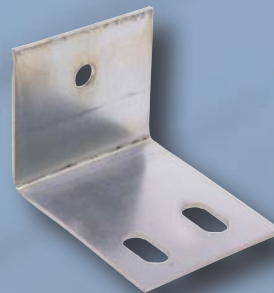
Cage Nut Bracket



Cable Support Bracket

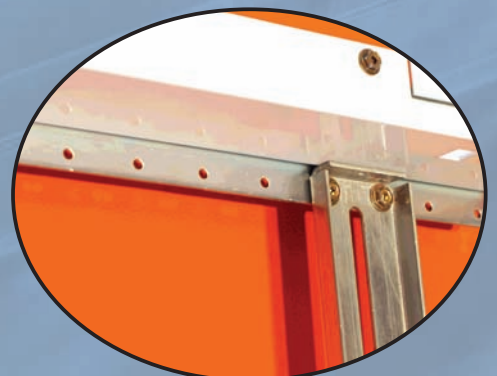


Wall Mounting Bracket



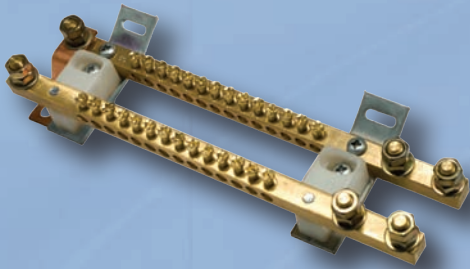
Channel Extension Plate

For securing channel mounted brackets where an escutcheon panel is used.



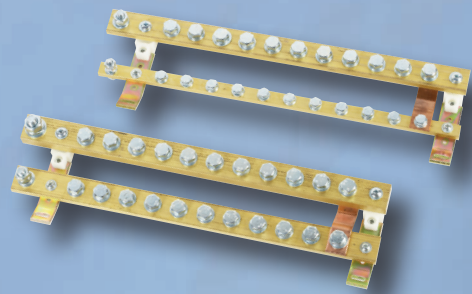
Earth & Neutral Tunnel Bars

100A & 200A combinations up to 72 ways.



Earth & Neutral Stud Bars

160A, 200A & 400A combinations up to 10 ways.



Bremca Cab Bolts & Flange Nut

For cabinet assembly.



Bremca Back Plate Screw

For attaching and earthing the back plate.



Bremca TEK Screw

For attaching cabinet accessories.



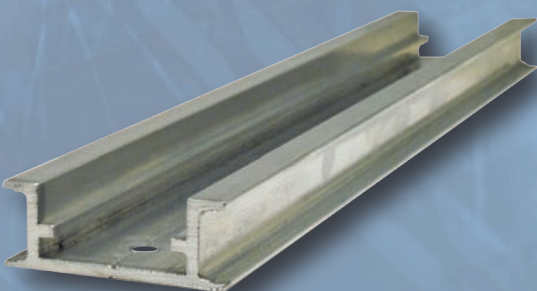
Cage Nuts

Fitted to corner gusset or cage nut brackets for fixed covers or escutcheons / masking panels.



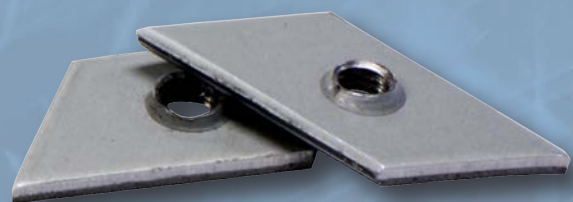
Bremca X-Rail

Heavy duty rail for mounting Din components and accessories.



X-Rail Nut

For adjustable mounting of non Din mount equipment on the Bremca X-Rail.



Metering Solutions



Metering Panel

- Double hinge panel. Lift off or fixed.
- Compliant to most Metering specifications.
- Suitable for Direct and CT metering.
- Available in 600 x 600mm and 900 x 600mm
- Tamper proof seals (to be ordered separately).
- Can be incorporated into 250 series switchboards or as a stand-alone meter panel.
- Quick and easy assembly



Arc Fault Containment Solutions

Arc Fault Containment

Electric arcs produce some of the highest temperatures known to occur on earth, up to 19,500°C. This temperature is almost 4 times higher than the temperature on the surface of the sun. The intense heat from an arc causes a sudden expansion of air resulting in a blast. Copper expands during an arc flash event at a factor of 67,000 times within a few milliseconds.

The Bremca 250 Series Switchboard range of arc fault containment cells are designed to contain the products of blast whilst safely allowing the pressure to dissipate into the adjoining cable or bus duct. In the event of a blast, this significantly lowers the risk of serious harm to people in close vicinity of the switchboard.

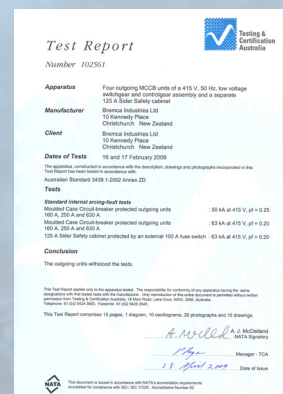
Tested to 63kA in accordance with AS/NZS3439 the arc fault containment cells are available in predetermined configurations, complete with depth adjustable gear trays / mounting plates, and side or rear entry cable or bar termination options. Door latches specific to the arc fault containment option complete the solution.

The Bremca 250 Series Arc Fault Containment Solution is only available to approved switchboard builders.



Arc Fault Containment Cell

- Available in heights of 250mm, 375mm and 500mm. All 500mm wide x 300mm deep.
- Tested by Testing & Certification Australia, Lane Cove Testing Station, Sydney.
- Robust adjustable depth gear tray for mounting of equipment.
- Option of rear entry gear trays.
- Supplied flat pack for easy shipping and storage.
- Quick and easy assembly.

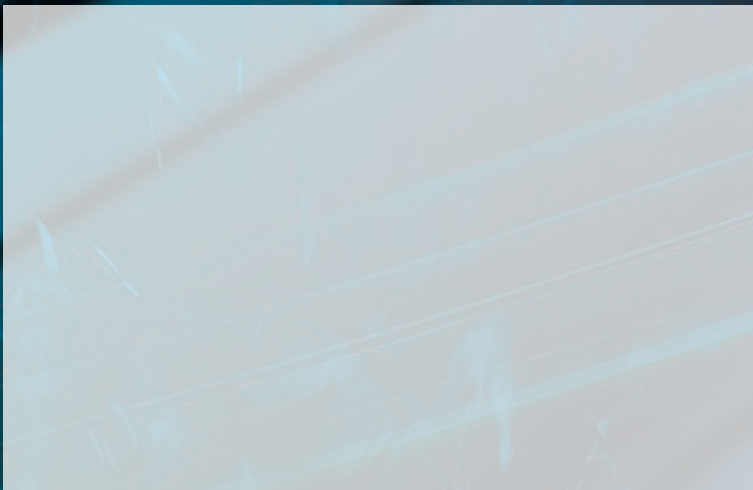


63kA Arc Fault Containment
test to AS 3439.1-2002

Available throughout Australia and New Zealand



Full quotation and Autocad design software packages available. Contact your nearest distributor for pricing and design requirements.



BREMCA

Email: sales@bremca.co.nz

Web: www.bremca.co.nz

www.bremca.com.au



The Bremca 250 Series Enclosure System is subject to patent protection and design registrations in many countries, including New Zealand, Australia and the United States.

Bremca, the Bremca logo and 250 Series are registered trade marks of Bremca Industries Limited and/or its affiliates.

Bremca reserves the right to implement engineering design changes to the 250 Series Switchboard Enclosure System.